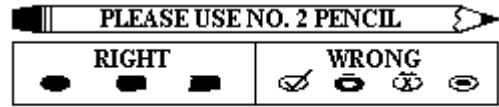


# Safe Schools Survey: Parent Form

- Please fill in bubble completely for each item using a #2 lead pencil.
- Erase cleanly any mark you wish to change.
- Make no stray marks.



## Part 1: GENERAL INFORMATION SECTION

**Note: If you have more than one child at this school, please complete this survey based on your oldest child attending this school.**

1. Name of school \_\_\_\_\_

2. How many of your children attend this school?

- 1     2     3     4 or more

3. What is the age of your oldest child attending this school?

- 5     6     7     8     9  
 10     11     12     13     14  
 15     16     17     18     19  
 20     21

4. What is the grade of your oldest child attending this school?

- Kinder     1st     2nd     3rd     4th  
 5th     6th     7th     8th     9th  
 10th     11th     12th

5. How long has your oldest child attended this school?

- This is his/her first year  
 This is his/her second year  
 This is his/her third year  
 He/she has been at this school four or more years

6. How are you related to your oldest child attending this school?

- Parent  
 Step-parent  
 Guardian  
 Foster parent  
 Other

7. What is your racial background?

- White, Non Hispanic  
 African American  
 Hispanic  
 Native American  
 Asian or Pacific Islander  
 Biracial/Multiracial  
 Other

8. How does your child typically get to school?

- School Bus     Walk     Car     Other

9. What might our school do to make parents feel more involved?  
(Please write your response below.)

**Please go to the next page.**

# Safe Schools Survey: Parent Form

## Part 2: SURVEY SECTION

**Please read each statement carefully.  
Then use the scale to mark your rating.  
Answer questions based on the current school year.**

1. Overall, I feel that this school is a safe school.
2. My child is getting a good education at this school.
3. School rules seem reasonable.
4. Students know what behavior is expected of them.
5. I feel welcome at my child's school. ....
6. My son or daughter is proud of his or her school.
7. My son or daughter generally behaves well in the classroom.
8. My child feels safe in the lunchroom.
9. My child feels safe in the school hallways.
10. Threats by one student against another are common at school. ....
11. My child feels safe going to and coming from school.
12. Physical fighting or conflicts happen regularly at school.
13. Name calling, insults or teasing happen regularly at school.
14. My child feels he/she belongs at this school.
15. School rules are clearly defined and explained so that I can understand them. ....
16. This year my child has had something worth \$10 or more stolen at school.
17. My child has friends at this school.
18. Parents are informed when a student has a discipline problem at school.
19. My child feels safe in the classrooms at school.
20. Students carrying weapons is a problem at my child's school. ....
21. My child is learning a lot at this school.
22. Arguments among students are common at school.
23. Teachers make sure school rules are followed.
24. I feel teachers care about my child's learning.
25. Parents are involved in activities at school. ....
26. Students use drugs or alcohol at school.
27. My child feels that teachers care about him or her as a person.

		Strongly Disagree(1)	Disagree(2)	Neutral(3)	Agree(4)	Strongly Agree(5)
1. Overall, I feel that this school is a safe school.	<input type="radio"/>	<input type="radio"/>	<input type="radio"/>	<input type="radio"/>	<input type="radio"/>	<input type="radio"/>
2. My child is getting a good education at this school.	<input type="radio"/>	<input type="radio"/>	<input type="radio"/>	<input type="radio"/>	<input type="radio"/>	<input type="radio"/>
3. School rules seem reasonable.	<input type="radio"/>	<input type="radio"/>	<input type="radio"/>	<input type="radio"/>	<input type="radio"/>	<input type="radio"/>
4. Students know what behavior is expected of them.	<input type="radio"/>	<input type="radio"/>	<input type="radio"/>	<input type="radio"/>	<input type="radio"/>	<input type="radio"/>
5. I feel welcome at my child's school. ....	<input type="radio"/>	<input type="radio"/>	<input type="radio"/>	<input type="radio"/>	<input type="radio"/>	<input type="radio"/>
6. My son or daughter is proud of his or her school.	<input type="radio"/>	<input type="radio"/>	<input type="radio"/>	<input type="radio"/>	<input type="radio"/>	<input type="radio"/>
7. My son or daughter generally behaves well in the classroom.	<input type="radio"/>	<input type="radio"/>	<input type="radio"/>	<input type="radio"/>	<input type="radio"/>	<input type="radio"/>
8. My child feels safe in the lunchroom.	<input type="radio"/>	<input type="radio"/>	<input type="radio"/>	<input type="radio"/>	<input type="radio"/>	<input type="radio"/>
9. My child feels safe in the school hallways.	<input type="radio"/>	<input type="radio"/>	<input type="radio"/>	<input type="radio"/>	<input type="radio"/>	<input type="radio"/>
10. Threats by one student against another are common at school. ....	<input type="radio"/>	<input type="radio"/>	<input type="radio"/>	<input type="radio"/>	<input type="radio"/>	<input type="radio"/>
11. My child feels safe going to and coming from school.	<input type="radio"/>	<input type="radio"/>	<input type="radio"/>	<input type="radio"/>	<input type="radio"/>	<input type="radio"/>
12. Physical fighting or conflicts happen regularly at school.	<input type="radio"/>	<input type="radio"/>	<input type="radio"/>	<input type="radio"/>	<input type="radio"/>	<input type="radio"/>
13. Name calling, insults or teasing happen regularly at school.	<input type="radio"/>	<input type="radio"/>	<input type="radio"/>	<input type="radio"/>	<input type="radio"/>	<input type="radio"/>
14. My child feels he/she belongs at this school.	<input type="radio"/>	<input type="radio"/>	<input type="radio"/>	<input type="radio"/>	<input type="radio"/>	<input type="radio"/>
15. School rules are clearly defined and explained so that I can understand them. ....	<input type="radio"/>	<input type="radio"/>	<input type="radio"/>	<input type="radio"/>	<input type="radio"/>	<input type="radio"/>
16. This year my child has had something worth \$10 or more stolen at school.	<input type="radio"/>	<input type="radio"/>	<input type="radio"/>	<input type="radio"/>	<input type="radio"/>	<input type="radio"/>
17. My child has friends at this school.	<input type="radio"/>	<input type="radio"/>	<input type="radio"/>	<input type="radio"/>	<input type="radio"/>	<input type="radio"/>
18. Parents are informed when a student has a discipline problem at school.	<input type="radio"/>	<input type="radio"/>	<input type="radio"/>	<input type="radio"/>	<input type="radio"/>	<input type="radio"/>
19. My child feels safe in the classrooms at school.	<input type="radio"/>	<input type="radio"/>	<input type="radio"/>	<input type="radio"/>	<input type="radio"/>	<input type="radio"/>
20. Students carrying weapons is a problem at my child's school. ....	<input type="radio"/>	<input type="radio"/>	<input type="radio"/>	<input type="radio"/>	<input type="radio"/>	<input type="radio"/>
21. My child is learning a lot at this school.	<input type="radio"/>	<input type="radio"/>	<input type="radio"/>	<input type="radio"/>	<input type="radio"/>	<input type="radio"/>
22. Arguments among students are common at school.	<input type="radio"/>	<input type="radio"/>	<input type="radio"/>	<input type="radio"/>	<input type="radio"/>	<input type="radio"/>
23. Teachers make sure school rules are followed.	<input type="radio"/>	<input type="radio"/>	<input type="radio"/>	<input type="radio"/>	<input type="radio"/>	<input type="radio"/>
24. I feel teachers care about my child's learning.	<input type="radio"/>	<input type="radio"/>	<input type="radio"/>	<input type="radio"/>	<input type="radio"/>	<input type="radio"/>
25. Parents are involved in activities at school. ....	<input type="radio"/>	<input type="radio"/>	<input type="radio"/>	<input type="radio"/>	<input type="radio"/>	<input type="radio"/>
26. Students use drugs or alcohol at school.	<input type="radio"/>	<input type="radio"/>	<input type="radio"/>	<input type="radio"/>	<input type="radio"/>	<input type="radio"/>
27. My child feels that teachers care about him or her as a person.	<input type="radio"/>	<input type="radio"/>	<input type="radio"/>	<input type="radio"/>	<input type="radio"/>	<input type="radio"/>

**Thank you for taking the time to complete this questionnaire!**