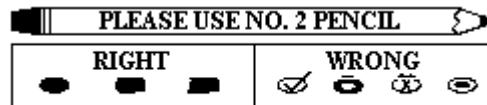


Safe Schools Survey: Secondary Student Form

- Please fill in bubble completely for each item using a #2 lead pencil.
- Erase cleanly any mark you wish to change.
- Make no stray marks.



Part 1: GENERAL INFORMATION

<p>1. Name of school _____</p> <p>2. Your sex <input type="radio"/> Male <input type="radio"/> Female</p> <p>3. How old are you? <input type="radio"/> 10 <input type="radio"/> 11 <input type="radio"/> 12 <input type="radio"/> 13 <input type="radio"/> 14 <input type="radio"/> 15 <input type="radio"/> 16 <input type="radio"/> 17 <input type="radio"/> 18 <input type="radio"/> 19 <input type="radio"/> 20 <input type="radio"/> 21</p> <p>4. What is your grade? <input type="radio"/> 6th <input type="radio"/> 7th <input type="radio"/> 8th <input type="radio"/> 9th <input type="radio"/> 10th <input type="radio"/> 11th <input type="radio"/> 12th</p>	<p>5. What is your racial background? <input type="radio"/> White, Non Hispanic <input type="radio"/> African American <input type="radio"/> Hispanic <input type="radio"/> Native American <input type="radio"/> Asian or Pacific Islander <input type="radio"/> Biracial/Multiracial <input type="radio"/> Other</p> <p>6. How long have you been at this school? <input type="radio"/> This is my first year <input type="radio"/> This is my second year <input type="radio"/> This is my third year <input type="radio"/> I have been at this school four or more years</p> <p>7. How do you typically get to school? <input type="radio"/> School Bus <input type="radio"/> Walk <input type="radio"/> Car <input type="radio"/> Other</p>
--	---

Part 2: SURVEY

**Please read each statement carefully.
 Then use the scale to mark your rating.
 Answer questions based on the current school year.**

		Strongly Disagree(1)	Disagree(2)	Neutral(3)	Agree(4)	Strongly Agree(5)
1. I feel that I can talk to a teacher or an administrator if I have a problem.	(1)	(2)	(3)	(4)	(5)	
2. I feel safe before and after school while on school grounds.	(1)	(2)	(3)	(4)	(5)	
3. Teachers and staff accept me for who I am.	(1)	(2)	(3)	(4)	(5)	
4. I feel that teachers care about my learning.	(1)	(2)	(3)	(4)	(5)	
5. I have seen students smoking at school or on school grounds.	(1)	(2)	(3)	(4)	(5)	
6. Teachers praise students when they have done well.	(1)	(2)	(3)	(4)	(5)	
7. Most students are proud of this school.	(1)	(2)	(3)	(4)	(5)	
8. Sale of drugs occurs on school grounds.	(1)	(2)	(3)	(4)	(5)	
9. Students cut classes or are absent regularly.	(1)	(2)	(3)	(4)	(5)	
10. Teachers and administrators supervise the halls during passing time.	(1)	(2)	(3)	(4)	(5)	

Please go to the next page.

Safe Schools Survey: Secondary Student Form

	Strongly Disagree(1)	Disagree(2)	Neutral(3)	Agree(4)	Strongly Agree(5)
11. Threats by one student against another are common at school.	<input type="radio"/>	<input type="radio"/>	<input type="radio"/>	<input type="radio"/>	<input type="radio"/>
12. Students use drugs or alcohol outside of school.	<input type="radio"/>	<input type="radio"/>	<input type="radio"/>	<input type="radio"/>	<input type="radio"/>
13. I have seen a gun at school this year.	<input type="radio"/>	<input type="radio"/>	<input type="radio"/>	<input type="radio"/>	<input type="radio"/>
14. Teachers listen carefully to what I have to say.	<input type="radio"/>	<input type="radio"/>	<input type="radio"/>	<input type="radio"/>	<input type="radio"/>
15. I feel safe in the lunchroom.	<input type="radio"/>	<input type="radio"/>	<input type="radio"/>	<input type="radio"/>	<input type="radio"/>
16. I am reading and responding to this survey carefully.	<input type="radio"/>	<input type="radio"/>	<input type="radio"/>	<input type="radio"/>	<input type="radio"/>
17. I am proud of this school.	<input type="radio"/>	<input type="radio"/>	<input type="radio"/>	<input type="radio"/>	<input type="radio"/>
18. Some students are regularly hassled by other students.	<input type="radio"/>	<input type="radio"/>	<input type="radio"/>	<input type="radio"/>	<input type="radio"/>
19. I feel safe going to and coming from school.	<input type="radio"/>	<input type="radio"/>	<input type="radio"/>	<input type="radio"/>	<input type="radio"/>
20. I have seen students with drugs or alcohol at school.	<input type="radio"/>	<input type="radio"/>	<input type="radio"/>	<input type="radio"/>	<input type="radio"/>
21. Physical fighting or conflicts happen regularly at school.	<input type="radio"/>	<input type="radio"/>	<input type="radio"/>	<input type="radio"/>	<input type="radio"/>
22. Name calling, insults or teasing happen regularly at school.	<input type="radio"/>	<input type="radio"/>	<input type="radio"/>	<input type="radio"/>	<input type="radio"/>
23. Students use alcohol or drugs at school.	<input type="radio"/>	<input type="radio"/>	<input type="radio"/>	<input type="radio"/>	<input type="radio"/>
24. I feel that I belong at this school.	<input type="radio"/>	<input type="radio"/>	<input type="radio"/>	<input type="radio"/>	<input type="radio"/>
25. I feel comfortable telling a teacher or an administrator about potential violence.	<input type="radio"/>	<input type="radio"/>	<input type="radio"/>	<input type="radio"/>	<input type="radio"/>
26. Groups of students cause problems or conflicts at school.	<input type="radio"/>	<input type="radio"/>	<input type="radio"/>	<input type="radio"/>	<input type="radio"/>
27. School rules are clearly defined and explained so that I can understand them.	<input type="radio"/>	<input type="radio"/>	<input type="radio"/>	<input type="radio"/>	<input type="radio"/>
28. School rules seem reasonable.	<input type="radio"/>	<input type="radio"/>	<input type="radio"/>	<input type="radio"/>	<input type="radio"/>
29. Teachers work hard to make every student successful.	<input type="radio"/>	<input type="radio"/>	<input type="radio"/>	<input type="radio"/>	<input type="radio"/>
30. Robbery or theft of school property over \$10 in value is common.	<input type="radio"/>	<input type="radio"/>	<input type="radio"/>	<input type="radio"/>	<input type="radio"/>
31. I have seen a knife at school (not including a cafeteria knife).	<input type="radio"/>	<input type="radio"/>	<input type="radio"/>	<input type="radio"/>	<input type="radio"/>
32. I feel welcome when I am at school.	<input type="radio"/>	<input type="radio"/>	<input type="radio"/>	<input type="radio"/>	<input type="radio"/>
33. Teachers enjoy teaching here.	<input type="radio"/>	<input type="radio"/>	<input type="radio"/>	<input type="radio"/>	<input type="radio"/>
34. I feel safe in my classrooms.	<input type="radio"/>	<input type="radio"/>	<input type="radio"/>	<input type="radio"/>	<input type="radio"/>
35. I feel that the teachers care about me as a person.	<input type="radio"/>	<input type="radio"/>	<input type="radio"/>	<input type="radio"/>	<input type="radio"/>
36. I am learning a lot at this school.	<input type="radio"/>	<input type="radio"/>	<input type="radio"/>	<input type="radio"/>	<input type="radio"/>
37. Arguments among students are common at school.	<input type="radio"/>	<input type="radio"/>	<input type="radio"/>	<input type="radio"/>	<input type="radio"/>
38. Students regularly cheat on tests or assignments.	<input type="radio"/>	<input type="radio"/>	<input type="radio"/>	<input type="radio"/>	<input type="radio"/>
39. Overall, I feel that this school is a safe school.	<input type="radio"/>	<input type="radio"/>	<input type="radio"/>	<input type="radio"/>	<input type="radio"/>
40. I am generally treated fairly at this school.	<input type="radio"/>	<input type="radio"/>	<input type="radio"/>	<input type="radio"/>	<input type="radio"/>
41. I feel safe in the bathrooms at school.	<input type="radio"/>	<input type="radio"/>	<input type="radio"/>	<input type="radio"/>	<input type="radio"/>
42. I am getting a good education at this school.	<input type="radio"/>	<input type="radio"/>	<input type="radio"/>	<input type="radio"/>	<input type="radio"/>
43. I feel safe in the school hallways.	<input type="radio"/>	<input type="radio"/>	<input type="radio"/>	<input type="radio"/>	<input type="radio"/>
44. My answers to these questions accurately reflect my feelings.	<input type="radio"/>	<input type="radio"/>	<input type="radio"/>	<input type="radio"/>	<input type="radio"/>
45. Students enjoy learning here.	<input type="radio"/>	<input type="radio"/>	<input type="radio"/>	<input type="radio"/>	<input type="radio"/>

Thank you for taking the time to complete this questionnaire!